



FREE
Facility
Maintenance
& Safety
Assessments



FOOD & BEVERAGE

Flooring Safety Guide

CONTENTS

- 3 **Causes of Coatings Failure**
Moisture, temperature changes and more
- 3 **Why Coatings Failure Will Cost You!**
Paint failure = downtime, inspection fines, employee injury & more
- 4 **Damaged Concrete Repair**
Concrete damage is both an employee slip/trip/fall hazard, as well as a food safety hazard, as it can harbor bacteria growth and be difficult to clean.
- 6 **Concrete Damage Prevention**
Prevent cracks and holes before they happen
- 7 **Zoning & Rodent Control**
Proven products designed for high-traffic, demanding environments
- 7 **Surface Coatings**
Prevent contaminants, rust and debris even in moisture, high humidity and low temp environments.
- 10 **MRO Solutions**
Solutions for every environment to protect company assets with cost savings now and into the future
- 11 **Additional Solutions from Rust-Oleum**



Rust-Oleum offers many solutions that are designed to be used in areas where minimal surface prep is possible. For optimal performance, consult the technical data sheet for the product in question and use a primer if coating a surface that is difficult to prepare.



Rust-Oleum offers products for every regulated VOC level. To find compliant products in your area, visit www.rustoleum.com/industrial

All High Performance products come with a 2 year rust-proof guarantee, if the proper application methods are followed. Additional warranty coverage is available for qualifying products systems. For additional information, visit www.rustoleum.com/industrial



Icons throughout the piece



Easy to apply

Rust-Oleum offers products that are easy to apply while still offering unmatched protection and durability.



°C/°F

Many of our products can be applied at low/high temperatures allowing for job completion even in the toughest conditions.



10-15 min

Cure times are extremely important when it comes to down time costs. Rust-Oleum has a large selection of products that offer quick return to service to keep those costs minimal.

This guide is intended to call out most commonly used colours, sizes and activators for Food & Beverage facilities. Visit Rustoleum.com/industrial for additional solutions and resources.

CAUSES OF COATINGS FAILURE



MOISTURE

Moisture is a constant condition within a food and beverage facility. This can harbor bacteria, present an employee safety hazard and accelerate the rusting process on uncoated metal surfaces.



THERMAL SHOCK

Rapid temperature changes caused by constant wash downs and blasts of steam, cause constant expansion and contraction that are culprits of early paint failure. This leads to concrete cracks and holes.



CHEMICAL EXPOSURE

From direct contact, to splash exposure, food & beverage facilities can have the highest levels of chemical exposure. This can erode coatings leaving the uncoated concrete floor, equipment or wall surfaces prone to more extensive damage.



CURES AT LOW TEMPERATURES

Your refrigerated areas can not be brought up to room temperature for a paint job.

- wall, surface & floor coatings specifically designed to cure at low temperatures

WHY COATINGS FAILURE WILL COST YOU

SURFACE

FLOOR

INCREASED LABOUR & MATERIAL COSTS DUE TO RE-APPLICATION.



Labour = 80% of reapplication costs



Paint = 20% of reapplication costs



CORROSION PERMANENTLY DAMAGING EQUIPMENT AS A RESULT OF FLAKING/PEELING PAINT.

The cost to replace is expensive + associated production downtime = exponentially higher cost than the original cost to maintain and protect your assets up front.



DAMAGE TO FORK LIFTS DUE TO UNEVEN SURFACES CAUSING HEAVY LOADS TO TIP OVER.

Damage to forklifts and/or the fallen material raises cost with potential injury to employees.



INCREASED DOWNTIME DUE TO INCREASED FREQUENCY OF RE-APPLICATION.

Loss of productivity increases product costs and labour costs



CROSS CONTAMINATION & INSPECTION FINES AS A RESULT OF FLAKING/PEELING PAINT.

The cost of a food recall comes from direct sales, lost sales, and brand damage.



OSHA FINES & EMPLOYEE COMPENSATION COSTS AS A RESULT OF EMPLOYEES' TRIPPING & FALLING* OR LACK OF REPAIRS/PREVENTATIVE MEASURES.

***Liberty Mutual's Workplace Safety Index reported that "fall from the same level" (\$10.17 billion) in worker compensation costs. Slips, trips and falls cause 15% of all accidental deaths.

**** Consider that the average cost of a typical slip and fall injury is \$20,000 while the cost to defend a slip and fall claim is \$50,000. Additionally, an employee misses an average of 38 work days with a slip-related injury, costing your organization in lost productivity while driving up your insurance costs.

*See our safety catalog for more employee safety solutions **<https://www.ncbi.nlm.nih.gov/pmc/articles/PMC5302274/>*** <https://www.arbill.com/arbill-safety-blog/painful-costs-of-slips-trips-and-falls>

**** <https://www.hubinternational.com/blog/2018/06/reduce-costs-by-preventing-slips-trips-and-falls/>



 Easy to apply

 10-15 min

 -20°C (-5°F)

InstaPatch
Rapid Cure Concrete Repair
 Two-component 100% solids polyurea, 2 times stronger than concrete.

- Best for cracks & small holes.
- Cures in less than 15 minutes.
- Simply mix and pour.

Grey 3.78 L Kit	276981
Tile Red 3.78 L Kit	284595
Grey 473 mL	288395
Tile Red 473 mL	288391

DAMAGED CONCRETE REPAIR



 Easy to apply

 2 hrs

Pourable Patch
Concrete Patching Compound

Easy to apply and fast drying for repairs to level concrete surfaces. Just add to water, mix and pour. Accepts heavy traffic, such as fork lifts, in only 2 hours.

- Best for spalled concrete with exposed aggregate or large holes.

25 kg Kit 291070





All food manufacturing, processing, packing, and holding must be conducted under such conditions and controls as are necessary to minimize the potential for the growth of microorganisms, allergen cross-contact, contamination of food, and deterioration of food.



Easy to apply

90 min

-40°C (-40°F)

Flexible Joint Sealant

Over 80% elongation to withstand 10-15% movement in the floor.

- Best for floor joints and cracks.

266 mL Tube	261998
650 mL Tube	266733
Caulk Gun 266 mL	261292

Also great for walls!



TurboKrete Concrete Patching Compound

2-4 times stronger than concrete and moisture insensitive.

- Best for deep holes. Also used on spalled concrete and vertical cracks.

13 L Kit	5494323
7.5 L Kit	253479
266 mL Tube	257395
266 mL Caulk Gun	261292



CONCRETE DAMAGE PREVENTION

Walls, floors, and ceilings within establishments must be built of durable materials impervious to moisture and be cleaned and sanitized as necessary to prevent adulteration of product or the creation of insanitary conditions.





• Line striping that wears too quickly leads to wasted time and money with constant repainting. Rust-Oleum has proven products designed for high-traffic, demanding environments.

9100 Epoxy Mastic
Long term solution. Versatile solvent-based epoxy with resistance to solvents, chemicals, abrasion and impact for long lasting, high gloss lines and aisles.

White 3.78 L	9192402
Yellow 3.78 L	9144402
Standard Activator (340 VOC) 3.78 L	9101402
Immersion Activator (340 VOC) 3.78 L	9102402

5600 Acrylic Urethane Floor Paint
Short term solution. Acrylic paint is a fast drying solution that requires little prep time.

White 3.78 L	251289
Yellow 3.78 L	251286

S60 System Water-Based Epoxy
Low Odor & Low VOC Solution. A durable, low VOC, low HAP and low odour floor paint solution.

Oyster White + Activator Kit*	248289
Safety Yellow + Activator Kit*	248288

* Kit includes 3.78 L of the base + 3.78 L of the activator.

ADDITIONAL COLOURS/SIZES/ACTIVATORS AVAILABLE



ZONING & RODENT CONTROL

SURFACE COATINGS

SURFACE COATINGS



V8400

Food & Beverage Alkyd Enamel

Resists humidity and high heat up to 100°C (212°F), prevents growth of mould & mildew on the paint film and cures down to -7.8°C (18°F).

- Prevents mould & mildew.

V8400 COLOURS (<340 VOC)

High Gloss Dairy White	259158
Safety Yellow	266691

V8400 PRIMERS (<340 VOC)

White Clean Metal Primer	259157
--------------------------	--------



Noxyde Elastomeric Acrylic

200% elasticity ensures no cracks will develop containing potential contaminants. Requires minimal surface prep and 10-year rust-proof warranty.

- Use as a ceiling paint to contain potential falling debris to ensure that it will not contaminate food underneath or nearby.

Off White 18.9 L 283085

White 18.9 L 283090

ADDITIONAL COLOURS/SIZES/ACTIVATORS AVAILABLE



Buildings, fixtures, and other physical facilities of the plant must be maintained in a sanitary condition and must be kept in repair sufficient to prevent food from becoming adulterated.



-6°C (20°F)

9200 Low Temperature Epoxy

Rust-Oleum® 9200 System is a very versatile, low VOC and low HAPS, two component phenalkamine epoxy. Low temperature cure -6°C (20°F) for non-immersion service. Direct-to-metal coating.

- Cures in environments with very high humidity, preventing early paint failure.

Grey 18.9 L	316834
White 18.9 L	316835
Blue 18.9 L	318207
Safety Yellow 18.9 L	320261
Activator	316836



Zinsser WaterTite Flexible Polyurethane

One component, moisture-curing polyurethane formula permanently fills joints and remains flexible over time. Prevents build up of Seals small cracks to prevent build up of potential contaminates in areas difficult to clean.

- Best for vertical cracks & joints for concrete and masonry walls, such as block or tilt up. Will fill up to 1.27 cm (1/2 in.) gaps.

298 mL Sealant

265984





Your equipment, handrails, structural steel and bollards are not always exposed to high humidity, moisture and low temperatures. When these challenges do not apply, Rust-Oleum offers a core group of products that you can count on to get the job done right the first time and protect these assets well into the future.

GENERAL PURPOSE RUST PAINT



3800 Direct-To-Metal Acrylic Enamel

- Delivers excellent corrosion resistance, will decrease downtime and is a low cost solution.

GENERAL PURPOSE RUST PAINT



V2100 Enamel Spray Paint

Dries in 20 minute to touch, withstands heat to 93°C (200°F) and matches V7400/7400 3.78 L colours.

V7400 Direct-To-Metal Alkyd Enamel

- Easy application, great coverage & durability results in labour savings. The colour choices are unmatched.

CHEMICAL AND ABRASION PAINT



9100 Direct-To-Metal Epoxy Mastic

Cures in high humidity.

OUR MOST DURABLE & VERSATILE COATING.

- Prevents growth of mould & mildew on the paint film. Can be used as a maintenance coating, floor paint, equipment coating, suitable for immersion and more.

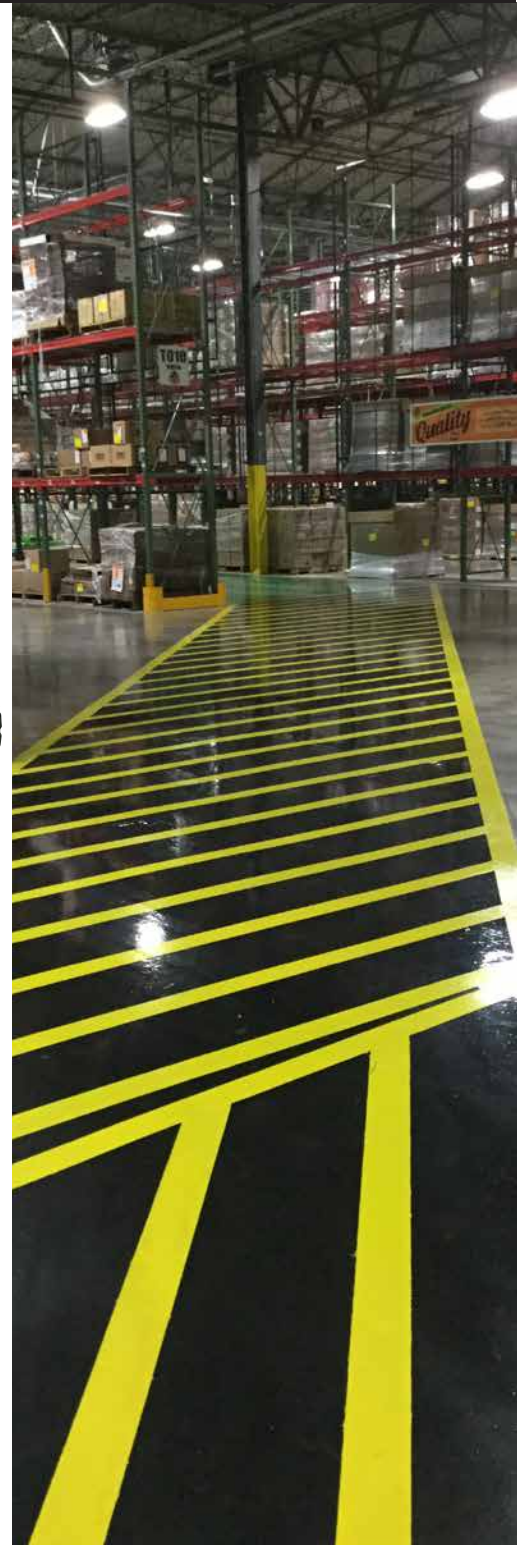
COLOURS	3800	V2100	V7400 (250 VOC)	9100
Gloss White	314389	V2192838	245406	9192402
Safety Yellow	314409	V2143838	245479	9144402
Safety Red	314410	V2163838	245478	204006
Safety Blue	314209	V2124838	245474	9125402
Safety Orange	315510	V2155838	245477	204005
Standard Activator*	-	-	-	9101402

ADDITIONAL COLOURS/SIZES/ACTIVATORS AVAILABLE

ONE BRAND, THOUSANDS OF SOLUTIONS.

Line Striping and Marking Solutions

Worn, faded, or chipping exterior striping and walkways can cause accidents, between vehicles or involving pedestrians. Easily create longer-lasting lines.



Employee Safety

Rust-Oleum can help identify and provide solutions for common safety issues. See our employee safety catalogue for more information.

Concrete Patch & Repair
· Line Striping · Handrails · Anti-Slip Solutions · Safety Colour Coding

Cleaners and Project Prep

General maintenance cleaning & degreasing surface prep for projects.

Flooring Solutions

Rust-Oleum is a leader in Industrial Grade, chemical and abrasion resistant smooth or Anti-Slip flooring.

Surface Prep · Line Striping · Floor Coatings & Paints · Floor Patch & Repair · Stairs/Decks · Anti-Slip



Get started with our **FREE** Facility Maintenance & Safety Assessments

1. Rely on Expertise.

Rust-Oleum sales team alongside your team will identify problems specific to your facility, recommend products and help plan for successful application.

2. Project Planning Within Your Budget.

We will help create a 5 year coatings plan.

Picking the right products for your facility is key. Reducing re-application frequency cuts down on costs of material, labour and downtime. Having projects planned out in advance saves time, money and hassle and ensures that the job is done right.

3. Actionable Reporting.

Receive a comprehensive facility assessment report, including recommendations for surface prep and coatings that will have increased service life over current selections. The report will tie our solutions to images of your facility.

We offer application training when end-users purchase recommended Rust-Oleum flooring solutions.

 **RUST-OLEUM**
CANADA